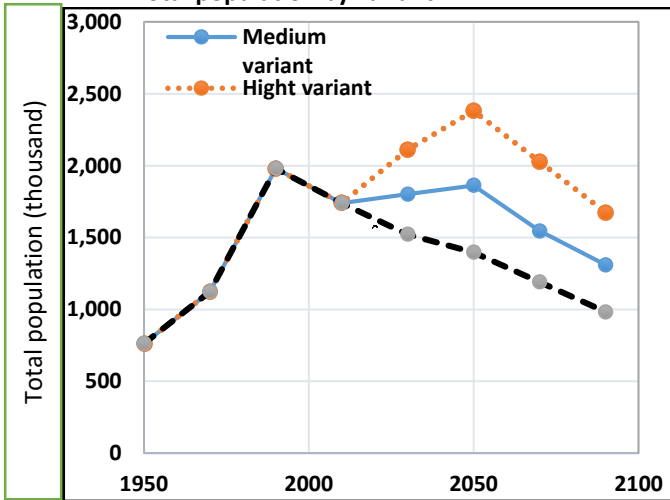


Kosovo

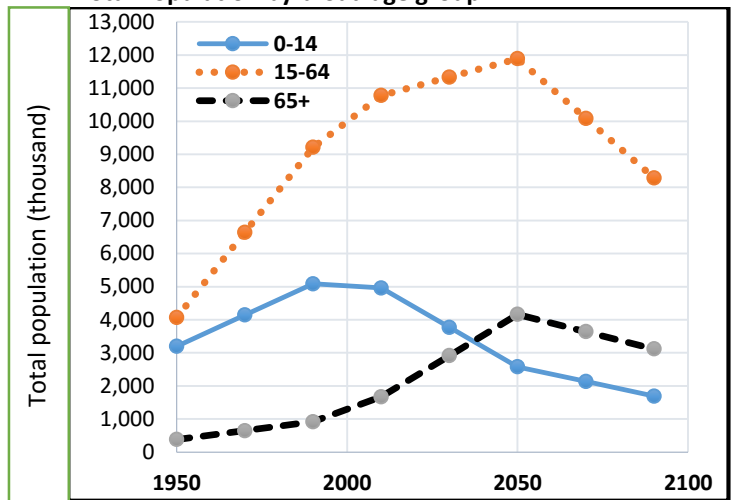
Demographic Profiles

Line Charts

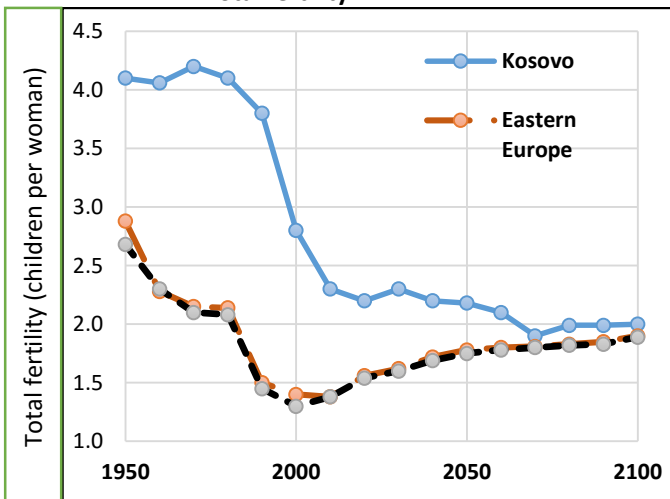
Total population by variant



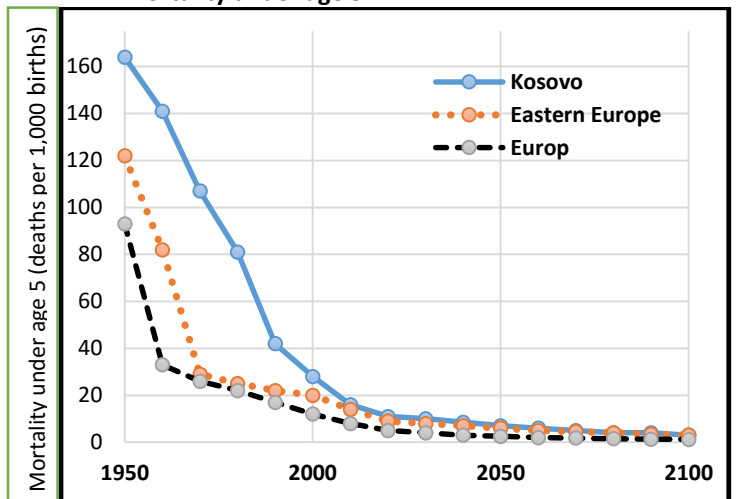
Total Population by broad age group



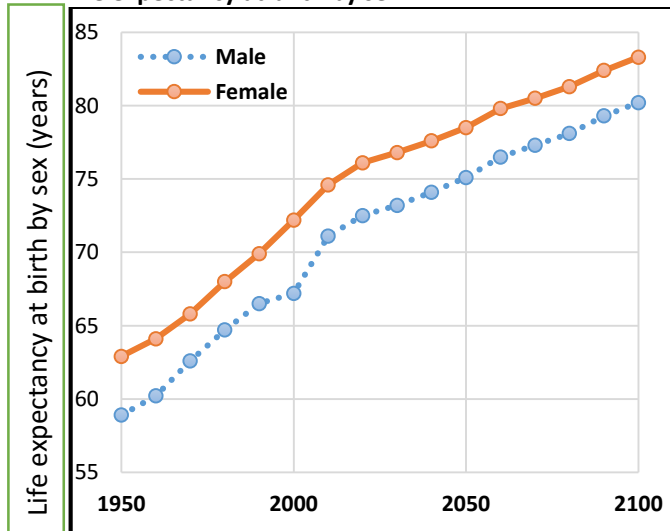
Total fertility



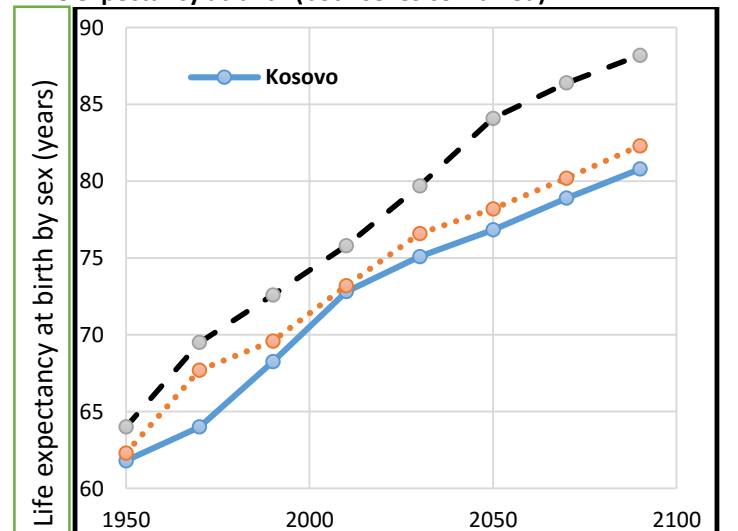
Mortality under age 5



Life expectancy at birth by sex

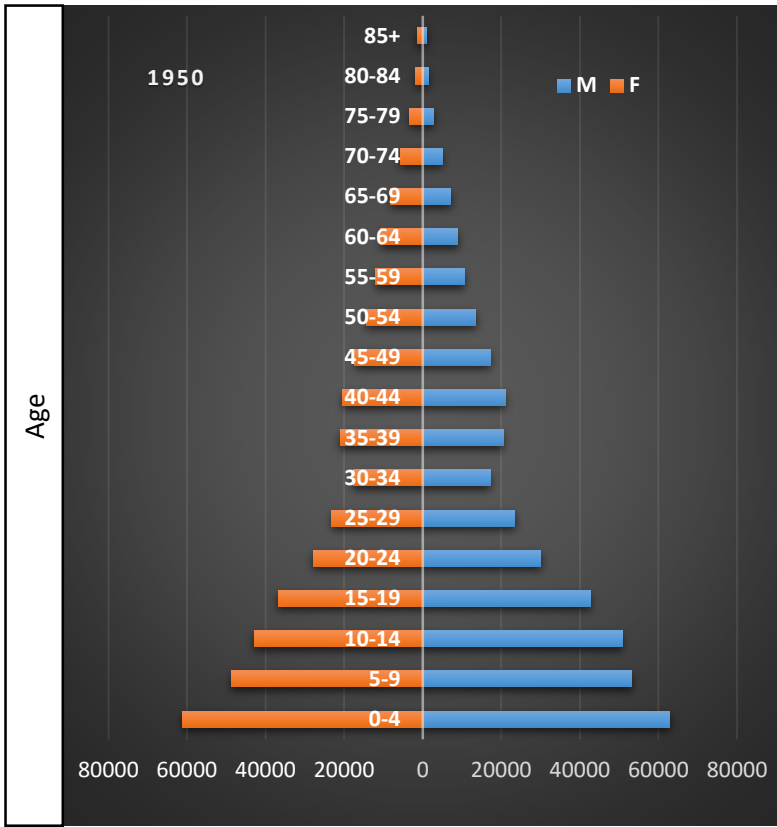


Life expectancy at birth (both sexes combined)

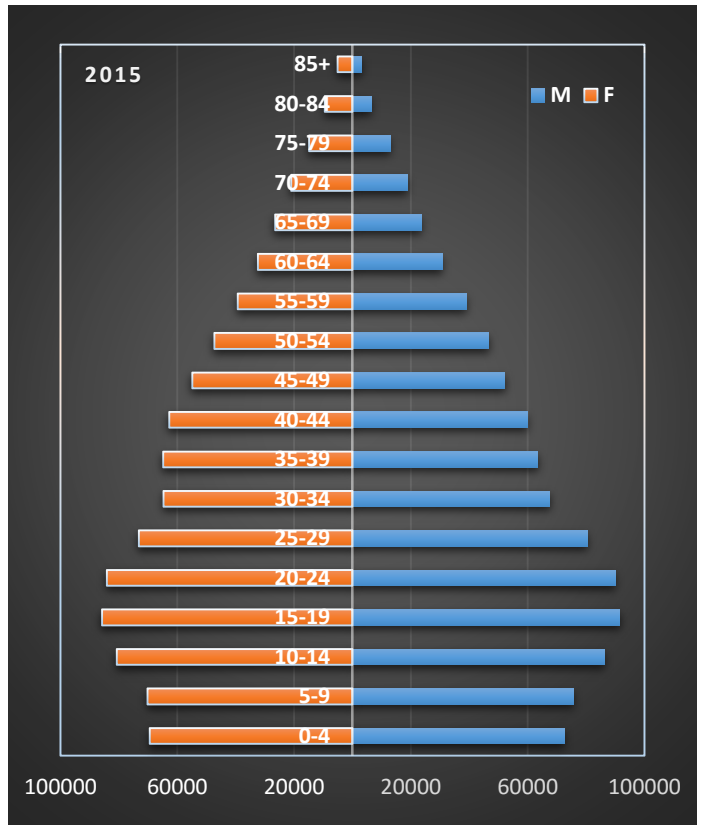


Kosovo Population Pyramids

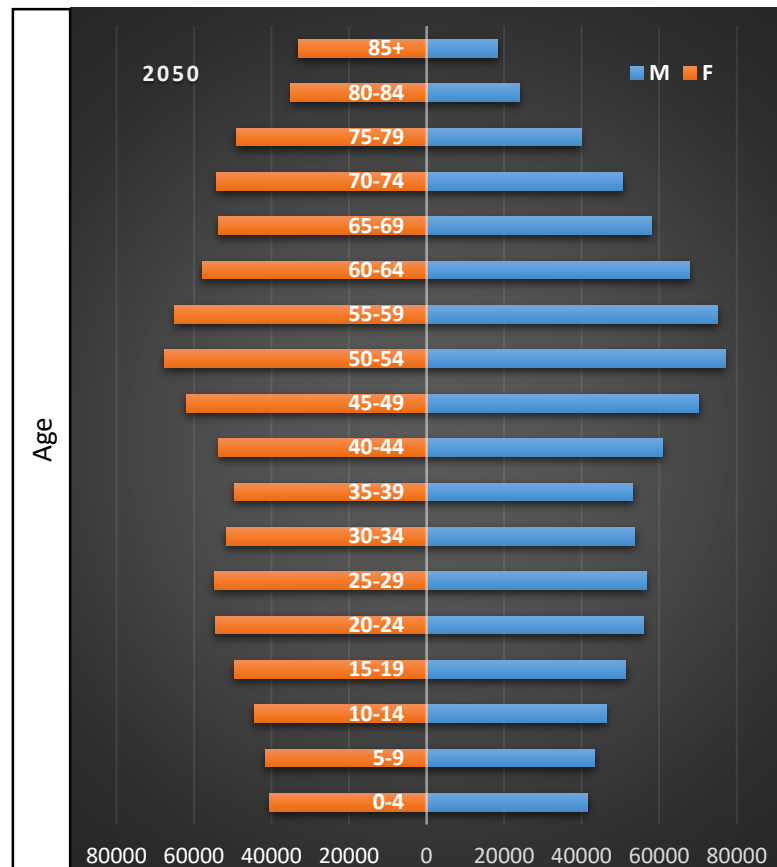
1950



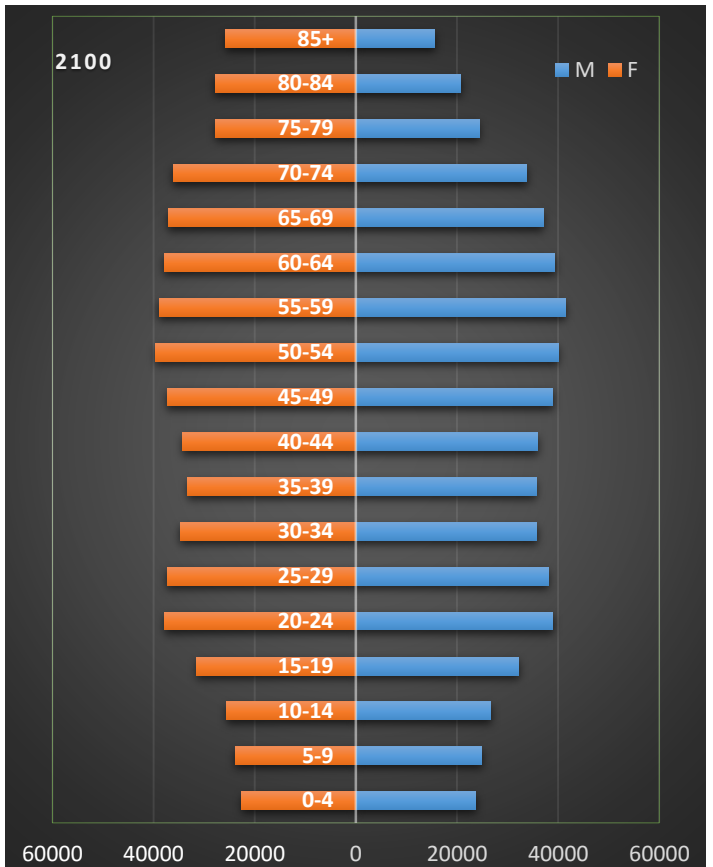
2015



2050

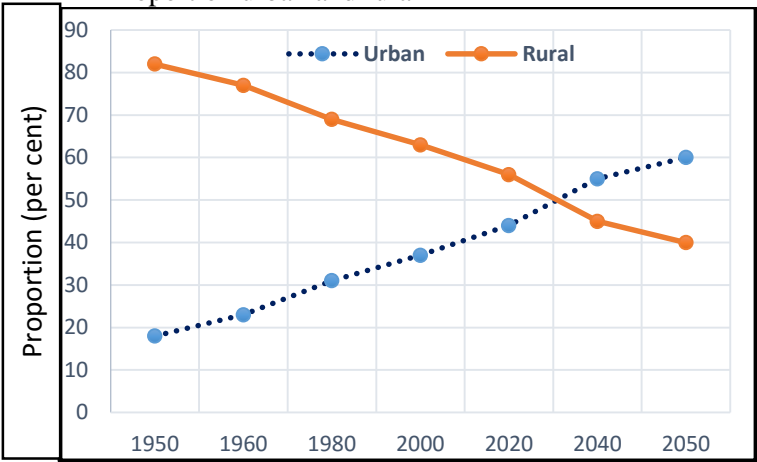


2100

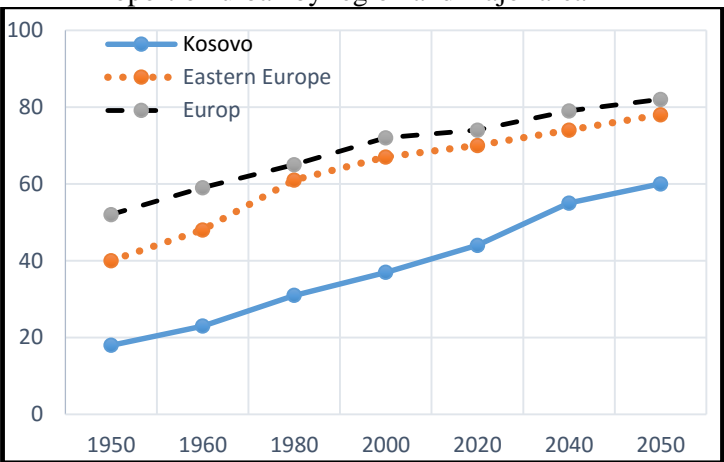


Urbanization profile
Country profile: Kosovo

Proportion urban and rural



Proportion urban by region and major area



MIGRATION PROFILES

Part II. Population indicators

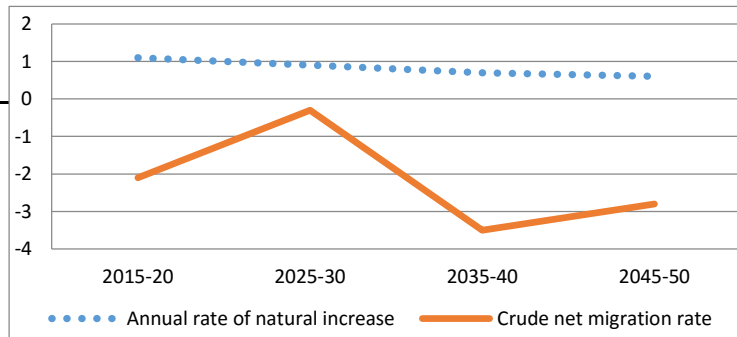
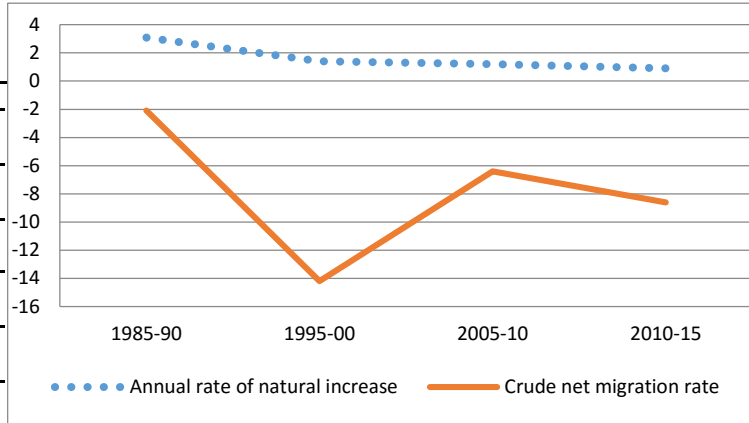
Population estimates

	1990	2000	2010	2013
Males	1,026,270	884,054	893,937	913,928
Females	960,786	826,768	880,531	906,703
Total	1,987,056	1,710,822	1,774,468	1,820,631
Percentage urban population	33	37	38	38.9
Percentage rural population	67	63	62	61.1

	1985-90	1995-00	2005-10	2010-15
Average annual rate of change	2.39	-2.62	0.5	-1.39
Annual rate of natural increase	3.1	1.4	1.2	0.9
Crude net migration rate	-2.1	-14.2	-6.4	-8.61
Total net migration				

Projected change in total population by component

	2015-20	2025-30	2035-40	2045-50
Total population at end of period	1,774,156	1,917,772	1,934,790	1,867,391
Population change during period	-30,102	143,616	17,018	-67,399
Annual rate of natural increase	1.1	0.9	0.7	0.6
Crude net migration rate	-2.1	-0.3	-3.5	-2.8



Projected change in working-age (15-64) population (x 1000)

	2015-20	2025-30	2035-40	2045-50
Medium variant	-62	-57	-44	-51
Zero-migration variant	-61	-57	-42	-50
Difference	-1	0	-2	-1

Development indicators (years are approximate for some indicators / countries)

	1990	2000	2010	2013
Life expectancy at birth	68.9	69	70.1	73.1
Adult literacy rate (ages 15 and older)			98.1	98.2
Human development index (HDI)				

Remittances (years are approximate for some indicators / countries)

	1990	2000	2010	2012
Inflows (millions of US dollars)			584	605
Outflows (millions of US dollars)				
Inflows as a share of GDP (%)				